

STANDARD ARRIVAL CHART  
INSTRUMENT (STAR) - ICAO

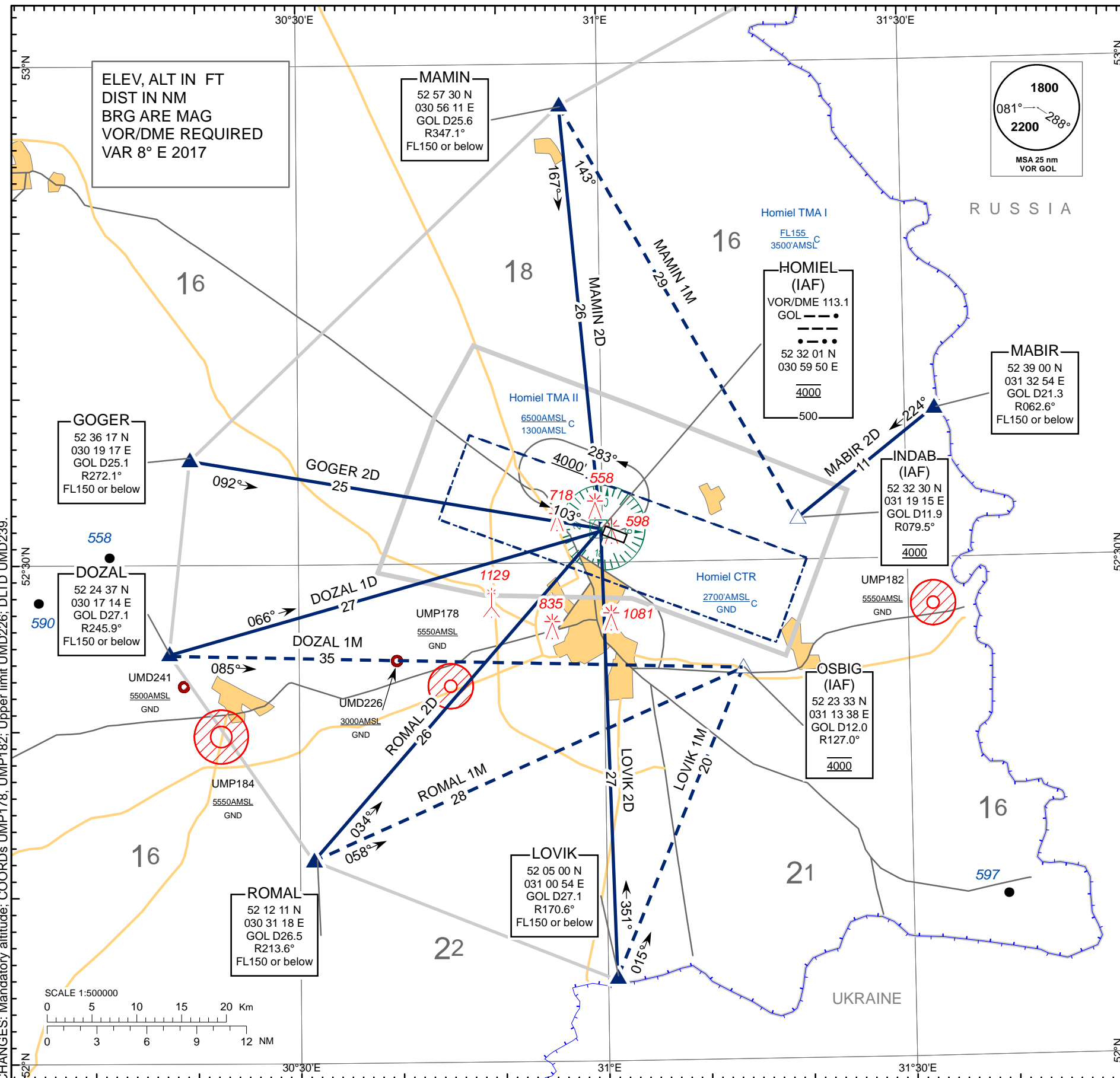
TRANSITION LEVEL: by ATC  
TRANSITION ALTITUDE: 6000

Alt set: - hPa (mm on req)  
- QNH (QFE on req)

APP 126.100  
TWR 118.100  
MET 119.550 (EN)  
124.475 (RUS)

HOMIEL  
RWY 28

GOGER 2D, DOZAL 1D, DOZAL 1M  
LOVIK 2D, LOVIK 1M, MABIR 2D  
MAMIN 2D, MAMIN 1M, ROMAL 2D  
ROMAL 1M



CHANGES: Mandatory altitude: COORDs UMP178, UMP182; Upper limit UMD226; DLTD UMD239.

BELAERONAVIGATSIA SOE

STANDARD ARRIVAL CHART INSTRUMENT (STAR) ROUTES  
HOMIEL RWY 28

STAR NAME	ROUTE
<b>GOGER 2D</b>	<b>GOGER TWO DELTA</b> After passing GOGER intercept GOL VOR R-272° inbound to GOL (IAF). Cross GOL (IAF) at 4000 AMSL.
<b>DOZAL 1D</b>	<b>DOZAL ONE DELTA</b> After passing DOZAL intercept GOL VOR R-246° inbound to GOL (IAF). Cross GOL (IAF) at 4000 AMSL.
<b>DOZAL 1M</b>	<b>GORUL ONE MIKE</b> After passing DOZAL proceed on 085° track to OSBIG (IAF). Cross OSBIG (IAF) at 4000 AMSL.
<b>LOVIK 2D</b>	<b>LOVIK TWO DELTA</b> After passing LOVIK intercept GOL VOR R-171° inbound to GOL (IAF). Cross GOL (IAF) at 4000 AMSL.
<b>LOVIK 1M</b>	<b>LOVIK ONE MIKE</b> After passing LOVIK proceed on 015° track to OSBIG (IAF). Cross OSBIG (IAF) at 4000 AMSL.
<b>MABIR 2D</b>	<b>MABIR TWO DELTA</b> After passing MABIR proceed on 224° track to INDAB (IAF). Cross INDAB (IAF) at 4000 AMSL.
<b>MAMIN 2D</b>	<b>MAMIN TWO DELTA</b> After passing MAMIN intercept GOL VOR R-347° inbound to GOL (IAF). Cross GOL (IAF) at 4000 AMSL.
<b>MAMIN 1M</b>	<b>MAMIN ONE MIKE</b> After passing MAMIN proceed on 143° track to INDAB (IAF). Cross INDAB (IAF) at 4000 AMSL.
<b>ROMAL 2D</b>	<b>ROMAL TWO DELTA</b> After passing ROMAL intercept GOL VOR R-214° inbound to GOL (IAF). Cross GOL (IAF) at 4000 AMSL.
<b>ROMAL 1M</b>	<b>ROMAL ONE MIKE</b> After passing ROMAL proceed on 058° track to OSBIG (IAF). Cross OSBIG (IAF) at 4000 AMSL.

THIS PAGE INTENTIONALLY LEFT BLANK